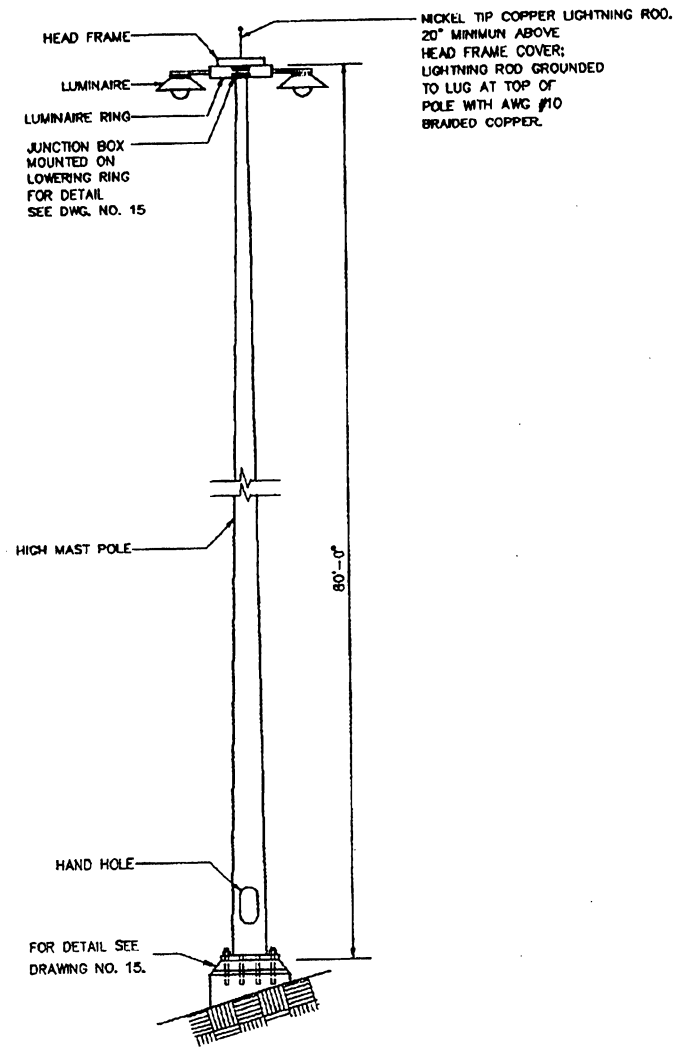
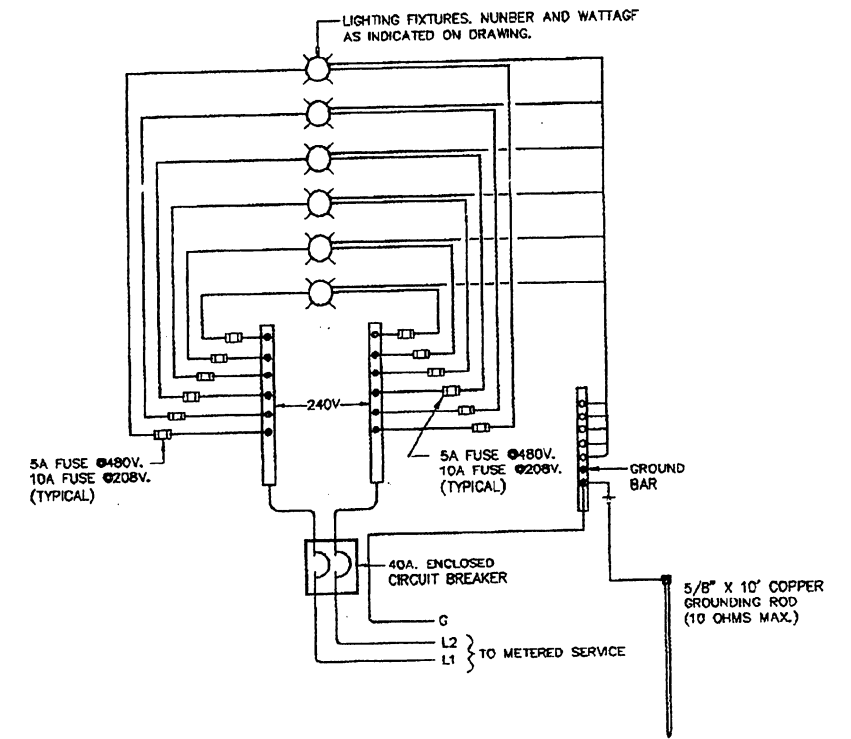


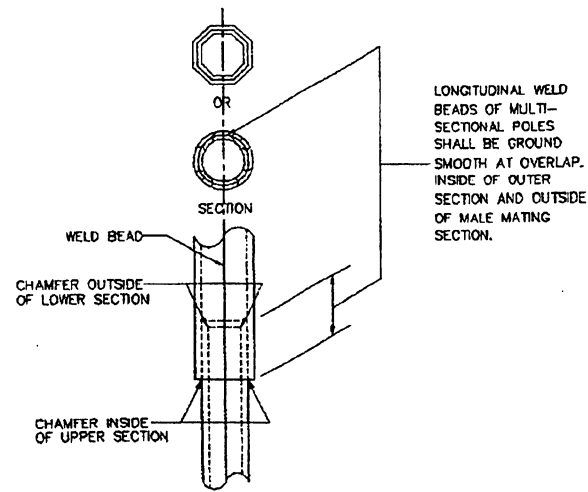
TYPICAL LOWER SECTION MECHANISM
NOT TO SCALE



TYPICAL HIGHMAST POLE
NOT TO SCALE



TYPICAL SCHEMATIC CIRCUIT
NOT TO SCALE



POLE OVERLAP DETAIL
NOT TO SCALE

POLE MATERIAL

HIGHMAST POLE MATERIAL:
ASTM A-572, GRADE 65 OR
ASTM A-595, GRADE 55
GALVANIZED ACCORDING
TO ASTM A-123.

LIGHTING LUMINAIRE

HIGH PRESSURE SODIUM OR METAL HALIDE LAMPS, WATTAGE TO BE DETERMINED BY DESIGNER, HIGH POWER FACTOR BALLAST, HIGHMAST ENCLOSED CUTOFF FIXTURE.

NOTES

- 1- SEAL HEAD FRAME AND LUMINAIRE ASSEMBLIES TO PREVENT INTRUSION OF BIRDS.
- 2- PROVIDE 2 POLE, CIRCUIT BREAKER DISCONNECT, RATED FOR SYSTEM VOLTAGE, AND IN NEMA 1 ENCLOSURE, 10 KAIC, MIN.
- 3- GROUND LIGHTNING ROD GROUNDING CONDUCTOR DIRECTLY ON THE POLE SHAFT WITH LUGS PROVIDED BY THE MANUFACTURER OF LIGHTNING ROD.
- 4- ALL MISCELLANEOUS HARDWARE SHALL BE STAINLESS STEEL
- 5- WIRING FROM JUNCTION BOX TO LUMINAIRE SHALL BE A IN WIREWAY PROVIDED IN LUMINAIRE RING OR IN A LIQUIDTIGHT FLEXIBLE CONDUIT.
- 6- AFFIX POLE IDENTIFICATION & DATE TAG TO EACH HIGH MAST POLE.
- 7- CONTRACTOR SHALL DELIVER TO PRHTA A HEAVY DUTY DRILL WITH EACH HIGH MAST SYSTEM.
- 8- NUMBER AND WATTAGE OF LUMINAIRES AS PER INDICATED ON DRAWINGS.
- 9- LIGHTING LUMINAIRES SHALL BE ABLE TO BE TESTED IN THE LOWERED POSITION, HIGH MAST SUPPLIER SHALL PROVIDE POWER CONNECTOR TO PERFORM THIS TEST.
- 10- THE CONTRACTOR SHALL SUBMIT A SHOP DRAWING FOR THE HIGH MAST SYSTEM AND BASE INCLUDING CALCULATIONS FOR 110 M.P.H. WIND WITH 1.3 GUST FACTOR.
- 11- THE CONTRACTOR SHALL TEST LOWERING DEVICE OF EACH HIGHMAST, FIVE TIMES AFTER INSTALLATION BEFORE ACCEPTANCE.

EFFECTIVE DATE: NOVEMBER 1996

COMMONWEALTH OF PUERTO RICO
DEPARTMENT OF TRANSPORTATION
AND PUBLIC WORKS
HIGHWAY AND TRANSPORTATION AUTHORITY

HIGHMAST LIGHTING STANDARD

RECOMMENDED BY: *[Signature]*
DESIGN AREA DIRECTOR
DATE: *10/27/96*

APPROVED BY: *[Signature]*
EXECUTIVE DIRECTOR
DATE: *11/1/96*

APPROVED BY: *[Signature]*
DIV. ASST. ENGR. DIVISION
DATE: *11/1/96*

DATE	REVISION	BY

STD. DWG. 14 OF 17