

PLAN

ELEVATION

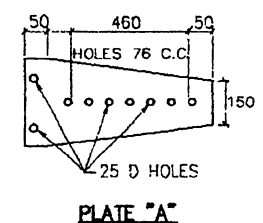
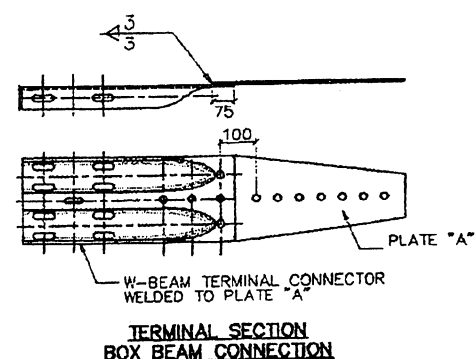
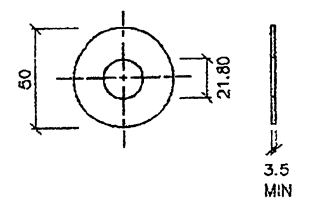


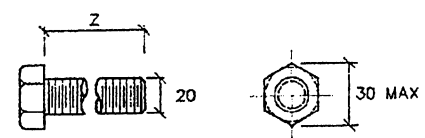
PLATE "A"



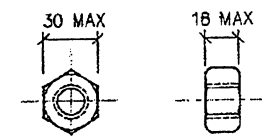
TERMINAL SECTION BOX BEAM CONNECTION



STEEL WASHER 20 D BOLT  
(SAME SPECIFICATIONS AS PLAIN ROUND WASHER)



Z = 245 (MEDIAN)  
Z = 235 (RIGHT SHOULDER)  
BOLT



NUT

20 D HEX BOLT AND NUT  
(SAME SPECIFICATIONS AS STEEL BLOCKOUT TO POST BOLT AND NUT) (245 STRESS AREA OF THREADED BOLT SHANK AND 98 MINIMUM BOLT STRENGTH)

**NOTE:**  
CONSTRUCTION OF THE TRANSITION SHALL BE A SUBSIDIARY OBLIGATION OF THE GUARD RAIL AND BOX BEAM ITEMS.

EFFECTIVE DATE: FEBRUARY 1997

|   |                  |  |
|---|------------------|--|
| COMMONWEALTH OF PUERTO RICO<br>DEPARTMENT OF TRANSPORTATION<br>AND PUBLIC WORKS<br>HIGHWAY AND TRANSPORTATION AUTHORITY |                  |  |
| METAL BARRIER<br>TRANSITION W-BEAM<br>STRONG-POST TO BOX BEAM<br>DOUBLE FACE  |                  | RECOMMENDED BY: <i>[Signature]</i><br>DESIGN AREA DIRECTOR<br>DATE: <i>DEC 14, 97</i><br>APPROVED BY: <i>[Signature]</i><br>EXECUTIVE DIRECTOR<br>DATE: <i>1-1-97</i><br>DIV. ADM. FHWA-PR DIVISION<br>DATE: <i>1-1-97</i> |
| DATE  | REVISION         | BY   |
| 1-1-97  | GENERAL REVISION | L.V.   |
| STD. DWG.   |                  | MB 27 OF 28  |

- I. SPECIFICATIONS**
- PLATE "A" SHALL BE FORMED FROM AASHTO M270M (ASTM A709M) GRADE 250 STEEL PLATE AND ZINC-COATED ACCORDING TO AASHTO M111 (ASTM A123). NO PUNCHING, DRILLING OR CUTTING IS PERMITTED AFTER THE PLATE IS ZINC-COATED.
  - DIMENSIONAL TOLERANCES NOT SHOWN OR IMPLIED ARE INTENDED TO BE THOSE CONSISTENT WITH THE PROPER FUNCTIONING OF THE PART, INCLUDING ITS APPEARANCE AND ACCEPTED MANUFACTURING PRACTICES.
  - BASE METAL THICKNESS SHALL BE 3.43.