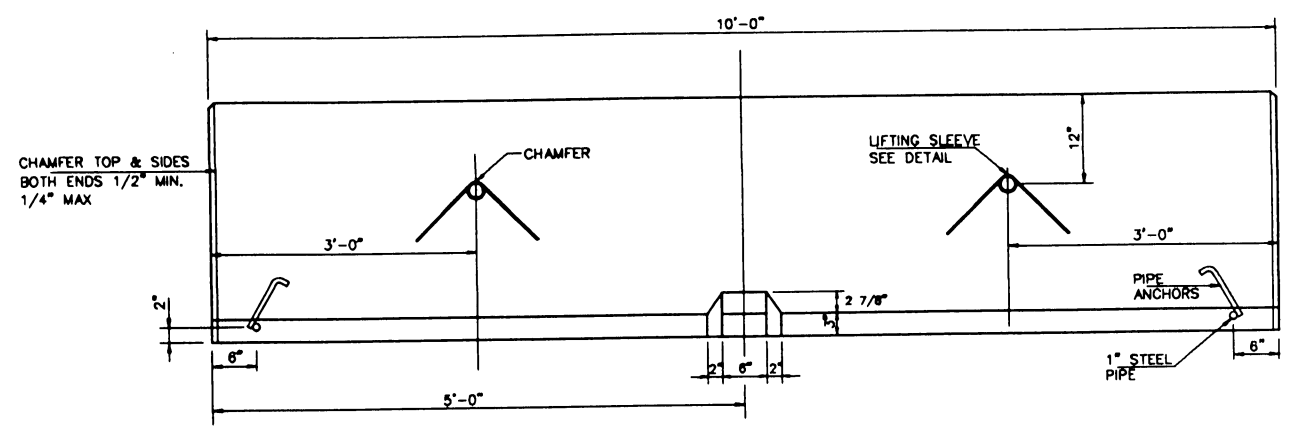
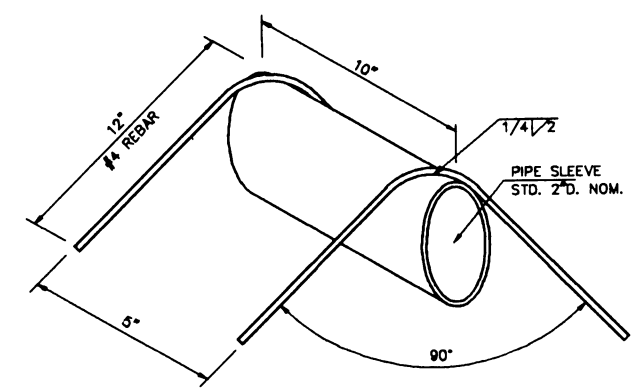


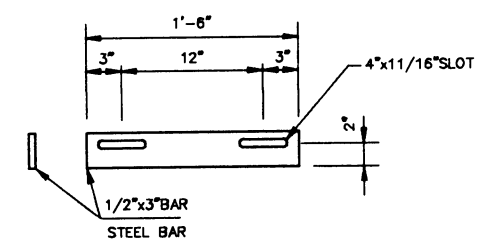
SECTION



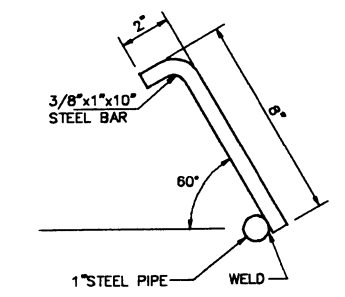
SIDE VIEW



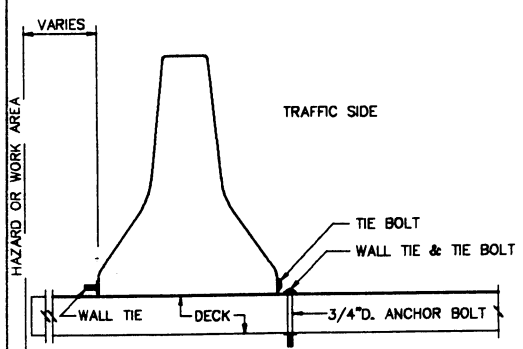
LIFTING SLEEVE



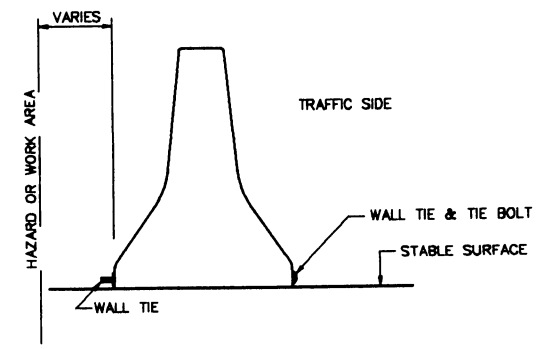
WALL TIE



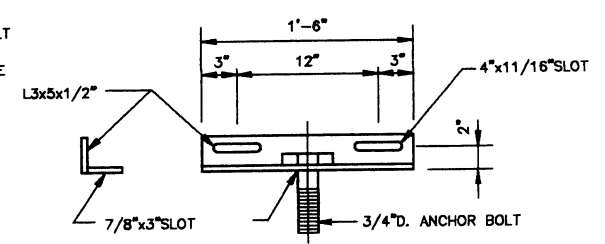
WALL TIE & ANCHOR PIPE



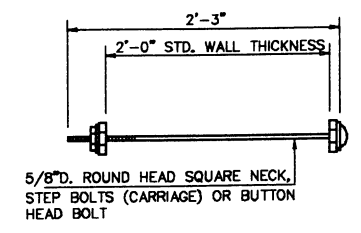
BRIDGE MOUNT



GROUND MOUNT



WALL TIE & ANCHOR



WALL TIE BOLT

GENERAL NOTES:

- 1 - CONCRETE SHALL HAVE A MINIMUM COMPRESSIVE STRENGTH OF 3,000 PSL.
- 2 - CONCRETE CLEAR COVER FOR REINFORCING BARS SHALL BE 1-1/2" (MIN.).
- 3 - A MINIMUM OF TWO (2) RECESSED LIFTING DEVICES SHALL BE USED ON EACH SECTION.
- 4 - TUBE STEEL SHALL BE ASTM A-500, GRADE B OR C.
- 5 - 3" x 6" DRAINAGE POCKETS - ONE REQUIRED FOR EACH SECTION.
- 6 - AFTER A BARRIER UNIT HAS BEEN PLACED AND THE CONNECTION KEY INSERTED, REMOVE ANY SLACK IN THE JOINT BY PULLING THE UNIT IN A DIRECTION PARALLEL TO ITS LONGITUDINAL AXIS.
- 7 - THE TEMPORARY CONCRETE BARRIER SHALL BE PRECAST UNITS OF 10 FEET LENGTH.
- 8 - TEMPORARY CONCRETE BARRIER SHALL BE PRECAST IN STEEL FORMS. THE REQUIREMENT FOR CURING OF SPECIFICATION 601 STRUCTURAL CONCRETE SHALL APPLY. THE BARRIER UNITS SHALL HAVE A SMOOTH FINISH. NO RUBBING, BROOMING OR OTHER WORKING SHALL BE PERMITTED AFTER THE FORMS ARE REMOVED EXCEPT FOR NECESSARY REPAIRS WHICH SHALL BE FINISHED TO MATCH WITH THE SURROUNDING SURFACE.
- 9 - THE CONTRACTOR SHALL DESIGN THE REINFORCING STEEL FOR LIFTING AND HANDLING THE CONCRETE BARRIER SECTIONS.
- 10 - ALL BARRIER SECTIONS SHALL BE PAINTED WITH WHITE PAINT IN ACCORDANCE WITH SPECIFICATION II-P-115 F TRAFFIC PAINT, TYPE II.
- 11 - THE BARRIER SYSTEM SHALL BE INSTALLED IN A CONTINUOUS WAY AND CONNECTED TOGETHER WITH THE KEY CONNECTION DETAIL SHOWN.
- 12 - CONTRACTOR SHALL DESIGN CONNECTION OF REFLECTIVE SHEETING PLATE TO BARRIER.
- 13 - WHEN BARRIER IS PLACED ON A BRIDGE DECK WHERE THE EXISTING BRIDGE PARAPET HAS BEEN DEMOLISHED, WALL TIES AND ANCHORS AS DEPICTED SHALL BE USED TO ANCHOR THE BARRIER TO THE BRIDGE DECK.
- 14 - REFLECTIVE SHEETING PLATES AND WHITE PAINT SHALL BE CONSIDERED AS SUBSIDIARY OBLIGATION OF THE UNDER PAY ITEMS FOR STANDARD SPEC. 638.

NOTES:

- 1 - SEE MPT 4 FOR ALTERNATE CONNECTOR ASSEMBLY PIN.
- 2 - REFLECTIVE SHEETING PLATES SHALL BE SPACED AT 10 FEET (SEE LOCATION ON DRAWING MPT 4).

EFFECTIVE DATE: APRIL 1996

COMMONWEALTH OF PUERTO RICO
DEPARTMENT OF TRANSPORTATION
AND PUBLIC WORKS
HIGHWAY AND TRANSPORTATION AUTHORITY

MAINTENANCE AND PROTECTION OF TRAFFIC
F SHAPE TEMPORARY CONCRETE BARRIER WITH SIDE PLATE

<p>RECOMMENDED BY: <i>[Signature]</i></p> <p>DESIGN AREA DIRECTOR DATE: 11/11/96</p> <p>APPROVED BY: <i>[Signature]</i></p> <p>EXECUTIVE DIRECTOR DATE: 5/18/96</p> <p>DIV. ADM. FHWA-PR DIVISION</p>	<p>DATE: _____</p> <p>REVISION: _____</p> <p>BY: _____</p> <p>GENERAL NOTE #4</p>
---	---

STD. DWG. MPT 5 OF 22

ANCHOR BOLTS SHALL HAVE A PULLOUT AND SHEAR CAPACITY OF 14,000 LBS. WEDGE OR CHEMICAL ANCHOR BOLTS MAY BE USED IN LIEU OF BOLT, WASHER AND NUT ASSEMBLY SHOWN. CORE DRILLS SHALL BE USED TO CONSTRUCT THROUGH BOLT HOLES, AND DRILLS SPECIFIED BY THE MANUFACTURER SHALL BE USED TO CONSTRUCT EXPANSION AND CHEMICAL ANCHOR BOLT HOLES, AFTER REMOVAL OF WALLS, ANCHORS SHALL BE REMOVED TO 1" MIN. BELOW DECK SURFACE AND HOLES FILLED WITH EPOXY GROUT.

WALL TIES & ANCHORAGE