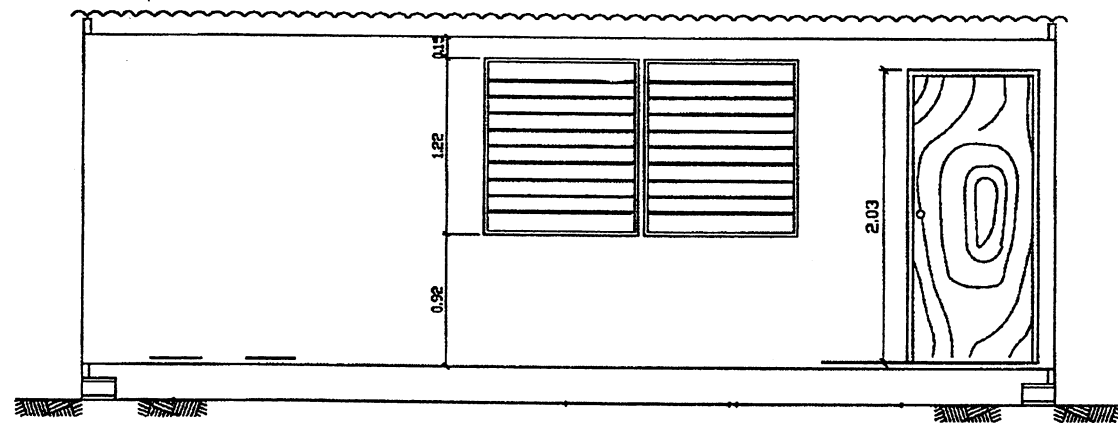
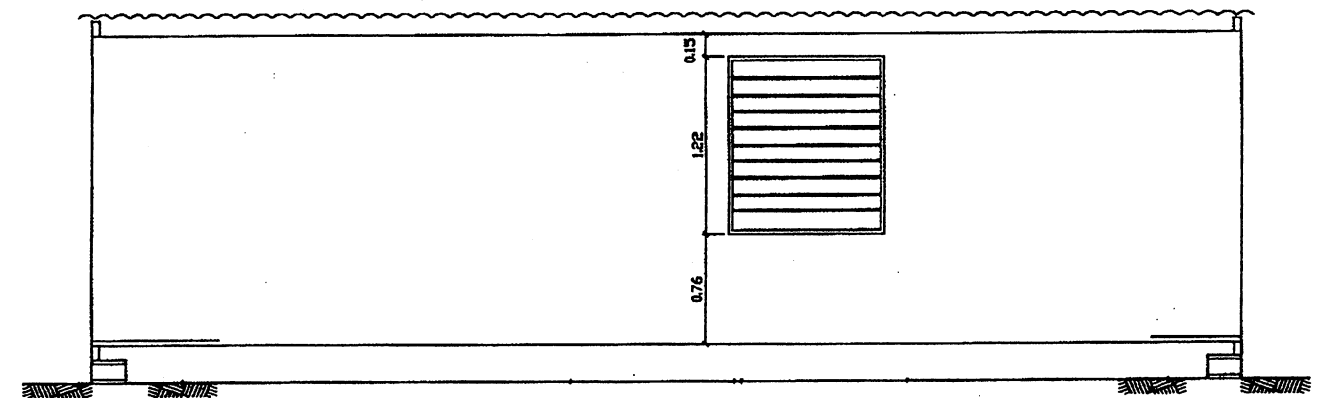


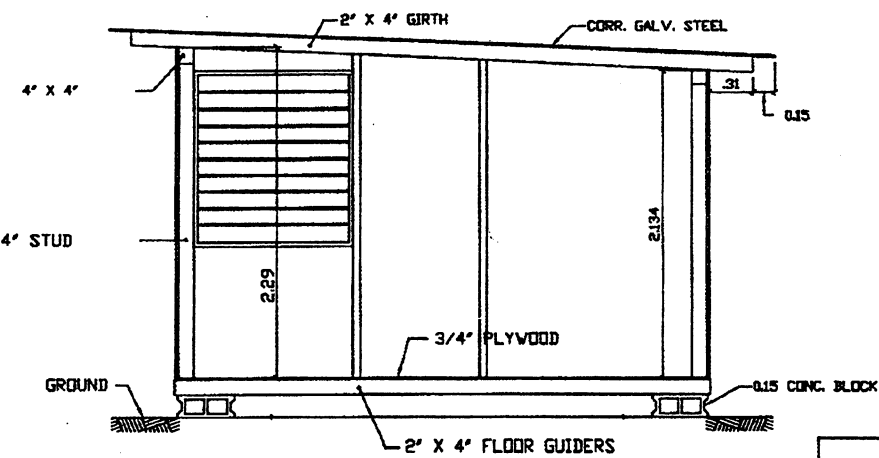
PLAN



FRONT ELEVATION



REAR ELEVATION



SECTION "A-A"

GENERAL NOTES

- A- BUILDING SHALL BE CONSTRUCTED NEAR THE WORK SITE AT A LOCATION ACCEPTABLE TO THE ENGINEER.
- B- CONTRACTOR SHALL FURNISH FOR FIELD OFFICE THE FOLLOWING EQUIPMENT IN GOOD WORKABLE CONDITIONS
- 1- DESK- ONE SIX DRAWER STEEL DESK WITH PLASTIC LAMINATED TOP.
- 2- CHAIR- ONE EXECUTIVE GYRATORY TYPE.
- 3- FILE- ONE FOUR DRAWER LEGAL SIZE FIRE PROOF FILING CABINET.
- 4- PLAN HOLD, COMMERCIAL TYPE
- 5- COMPUTER WITH WORD PROCESSOR
- 6- TELEPHONE
- 7- AIR CONDITIONER
- 8- WATER COOLER
- 9- OTHERS, AS PER SPECIFICATIONS

EFFECTIVE DATE: OCTOBER 1997

COMMONWEALTH OF PUERTO RICO DEPARTMENT OF TRANSPORTATION AND PUBLIC WORKS HIGHWAY AND TRANSPORTATION AUTHORITY			
FIELD AND LABORATORY OFFICE MODEL 1		RECOMMENDED BY: <i>[Signature]</i>	
		DESIGN AREA DIRECTOR DATE: 9-15-97	
		APPROVED BY: <i>[Signature]</i>	
		EXECUTIVE DIRECTOR DATE: 9-25-97	
		APPROVED BY: <i>[Signature]</i>	
		DIV. ADM. FHWA-PR DIVISION DATE: 9-25-97	
DATE	REVISION	BY	
			STD. DWG. 1 OF 5