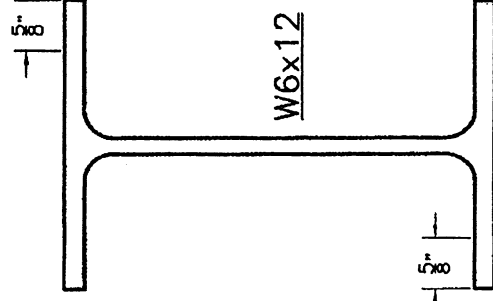
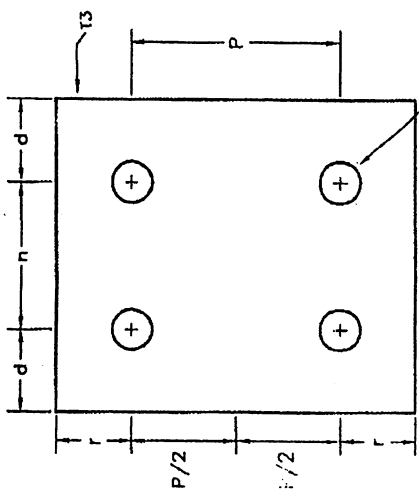
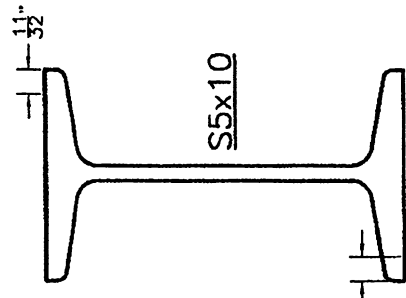
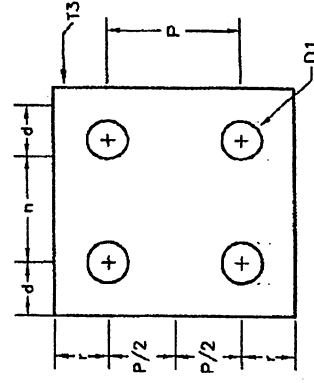


HINGE PLATE



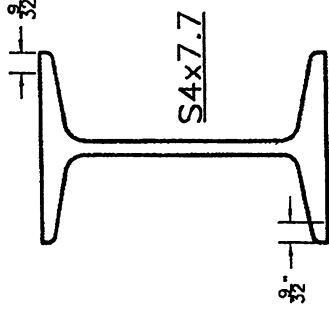
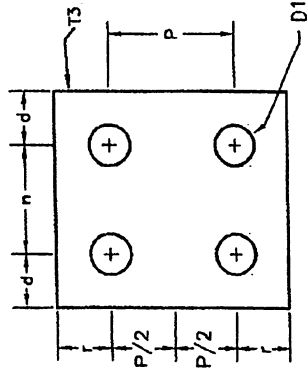
W6x12

HINGE PLATE

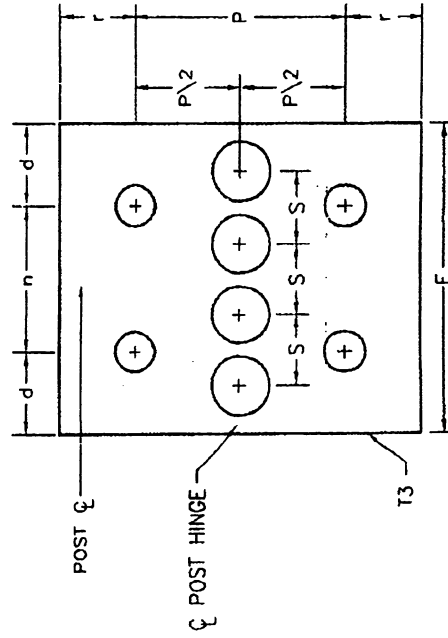


S5x10

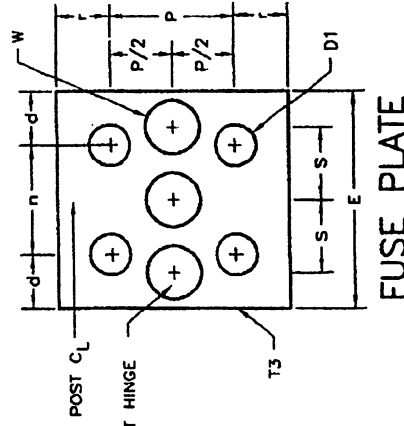
HINGE PLATE



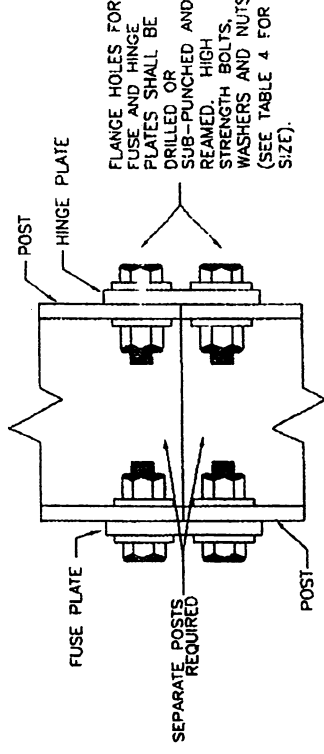
S4x7.7



FUSE PLATE



FUSE PLATE



HINGE JOINT DETAIL

LEGEND

- W = HOLE DIAMETER
- D1 = HOLE DIAMETER
- T3 = PLATE THICKNESS

FLANGE HOLES FOR FUSE AND HINGE PLATES SHALL BE DRILLED OR SUB-PUNCHED AND REAMED. HIGH STRENGTH BOLTS, WASHERS AND NUTS (SEE TABLE 4 FOR SIZE).

EFFECTIVE DATE: AUGUST 1999

COMMONWEALTH OF PUERTO RICO
DEPARTMENT OF TRANSPORTATION
AND PUBLIC WORKS
HIGHWAY AND TRANSPORTATION AUTHORITY

RECOMMENDED BY:
ASST. DIR. FOR TRAFFIC
DATE: 1-8-99

APPROVED BY:
EXECUTIVE DIRECTOR
DATE: 3-26-99

APPROVED BY:
DATE: 5-11-99

BY: *[Signature]*

**GROUND MOUNTED
BREAK-AWAY SIGNS
EXIT NUMBER PANEL
FUSE AND HINGE PLATES**

DATE	REVISION	BY
08-05-99	FUSE AND HINGE PLATES DIMENSIONS	LV.

STD. GMTS
DWG. 12B OF 15

TABLE 4

FUSE AND HINGE PLATES DATA

POST SECTION	BOLT SIZE (IN.)	E (IN.)	P (IN.)	D1 (IN.)	d (IN.)	n (IN.)	r (IN.)	s (IN.)	T3 (IN.)	W (IN.)
S4 x 7.7	1/2 ϕ	3	1 3/4	9/16	3/4	1 1/2	3/4	1	1/4	3/4
S5 x 10	1/2 ϕ	3 1/4	1 7/8	9/16	3/4	1 3/4	3/4	1 1/16	1/4	13/16
W6 x 12	5/8 ϕ	4 5/16	2 15/16	11/16	1 1/8	2 1/16	1 1/16	1	1/4	13/16