

MEMBER	MATERIAL		LENGTH (m)
	ALUMINUM	STEEL	
A	L 4"x6"x3/8"	L 4"x6"x3/8"	0.81 MIN. 1.20 MAX.
B	L 4"x6"x3/8"	L 4"x6"x3/8"	0.15
C	L 6"x6"x3/8"	L 6"x6"x3/8"	3.50 MAX.
D	BENT PLATE 3"x6"x3/8"	BENT PLATE 3"x6"x3/8"	0.15

MATERIALS:

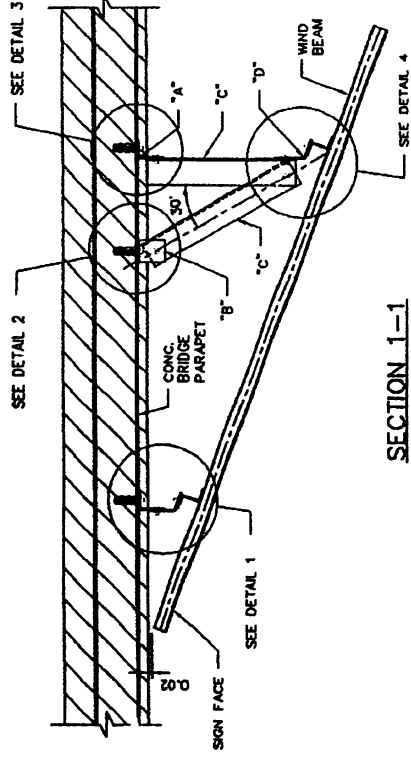
- DESIGN CONSTRUCTION MATERIALS, HANGERS, WIND BEAMS, SIGN PANEL AND ALL OTHERS, DETAILS OF THE SIGN ASSEMBLY SHALL BE AS REQUIRED IN THE OVERHEAD SIGNS STANDARD DRAWINGS (OHTS).
- STRUCTURAL STEEL : AASHTO M270 GRADE 36 (ASTM A36)
- ALUMINUM MATERIAL : TYPE 6061-T6
- HIGH STRENGTH BOLTS : AASHTO M164 TYPE 1 (ASTM A325) BOLTS AND NUTS SHALL BE ZINC-COATED TO EITHER AASHTO M232 (ASTM A153) FOR CLASS C OR AASHTO M298 (ASTM B689) CLASS 50 TYPE 1. WASHERS SHALL BE INSTALLED AT ALL BOLT CONNECTIONS.
- HILT HVA ADHESIVE SYSTEM:
- HAS STANDARD ROD AASHTO M270 GRADE 36 (ASTM A-36)
- HVA ADHESIVE CAPSULE
- ALL STEEL SHAPES, ANGLES, TEES AND PLATES SHALL BE HOT DIP GALVANIZED IN ACCORDANCE WITH ASTM M-111.
- BRACINGS SHALL BE INSTALLED AT ALL HANGER LOCATION NUMBER AND SPACING OF HANGER SHALL BE AS PER THE SIGN PANEL ASSEMBLY (OHTS).

NOTES:

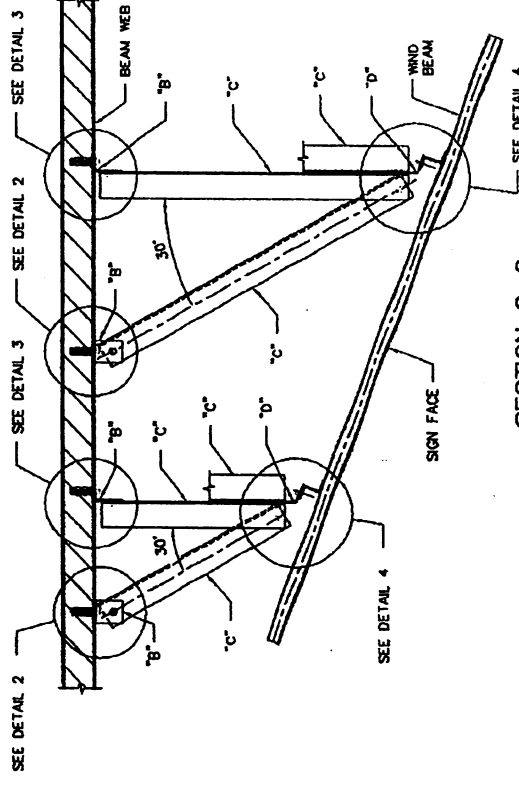
- FOR SIGNS WHICH EXCEED THE SKEW ANGLE LIMITS INDICATED IN THIS STANDARD DRAWING, THE CONTRACTOR SHALL SUBMIT SHOP DRAWINGS IN COMPLIANCE WITH THE CONTRACT REQUIREMENTS, FOR THE AUTHORITY APPROVAL.
- ALL HANGER SHALL BE FASTENED TO THE SUPPORTING FRAMING AS PER DETAILS SHOWN.
- FOR BEAMS OTHER THAN AASHTO PRESTRESSED BEAMS AND DIFFERENT SUPERSTRUCTURES, THE CONTRACTOR SHALL SUBMIT SHOP DRAWINGS FOR THE APPROVAL BY THE AUTHORITY.
- ALL BOLTS SHALL BE 5/8 INCH.

LEGEND:

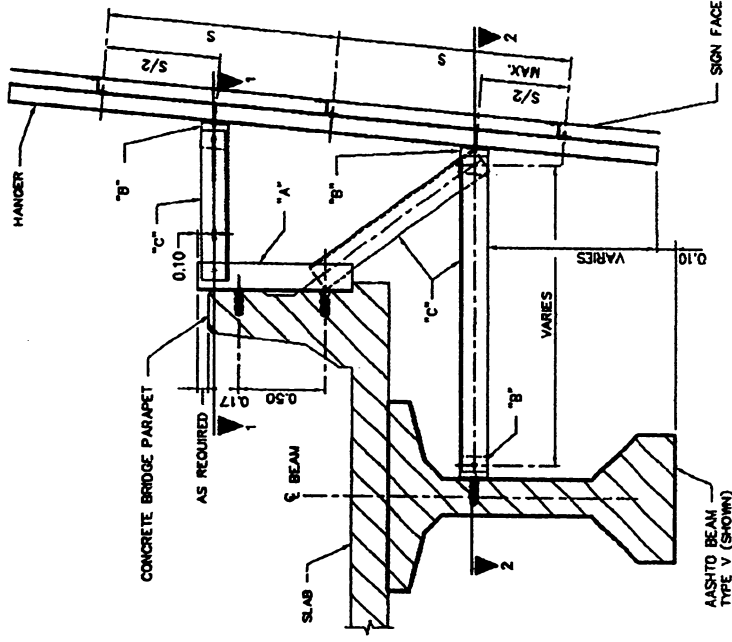
- EXISTING STRUCTURE
- S - SPACING BETWEEN WIND BEAMS



SECTION 1-1

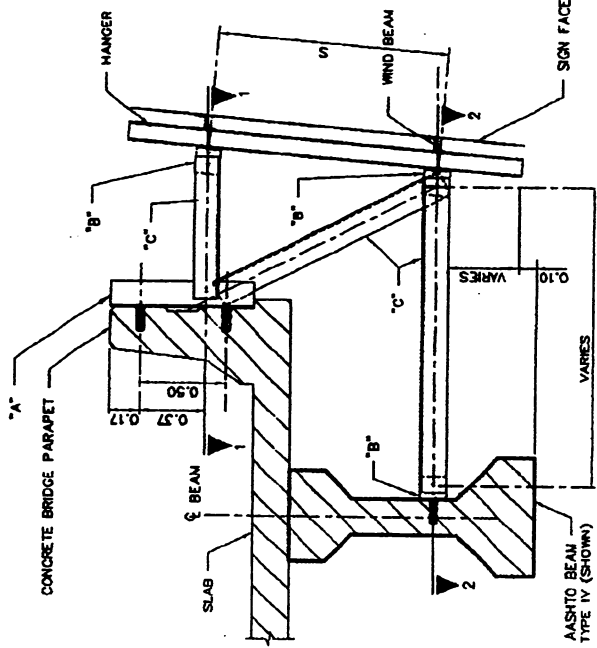


SECTION 2-2



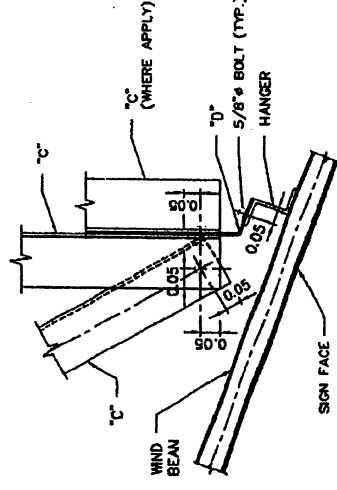
TYPICAL ELEVATION FOR BEAMS
TYPE V & VI

(3) WIND BEAM PANEL SHOWN

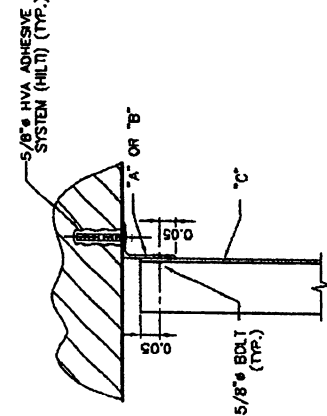


TYPICAL ELEVATION FOR BEAMS
TYPE I, II, III & IV

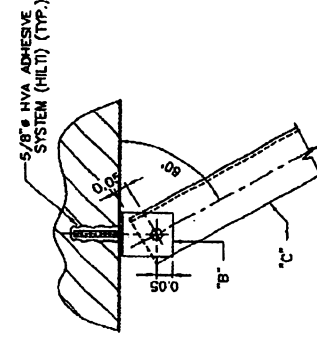
(2) WIND BEAM PANEL SHOWN



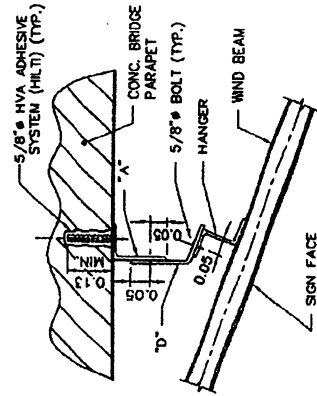
DETAIL 4



DETAIL 3



DETAIL 2



DETAIL 1

EFFECTIVE DATE: AUGUST 1999

COMMONWEALTH OF PUERTO RICO
DEPARTMENT OF TRANSPORTATION
AND PUBLIC WORKS
HIGHWAY AND TRANSPORTATION AUTHORITY

RECOMMENDED BY:

ASST. SFC. DIR. FOR TRAFFIC
DATE: 8-1-99

APPROVED BY:

EXECUTIVE DIRECTOR
DATE: 8-1-99

APPROVED BY:

DIR. ADM. FHWA-PR DIVISION
DATE: 8-1-99

SIGNS BRIDGE
CONNECTION
SKEW ANGLE
FROM 10° TO 25°

DATE	REVISION	BY

STD. SBC
DWG. 2 OF 2